

# FAIRVIEW SCHOOL FACILITIES ENGAGEMENT REPORT

SEPTEMBER 18, 2025



# Introduction

## Decision Overview

The Peace River School Division (PRSD) Board of Trustees is developing an updated recommendation for their 2025-2028 capital plan, as specifically requested by the Premier of Alberta in June, 2025, regarding the future of school facilities in Fairview. This recommendation will be informed by community input gathered from staff, parents and other stakeholders during two engagement sessions held on September 9, 2025.

## Scope of Engagement

The engagement provided a means for the PRSD of Trustees to gather input from Fairview stakeholders—including staff, parents, and community members—on the future of PRSD school facility configurations. The primary goal was to determine the community's level of agreement on a predefined set of infrastructure options.

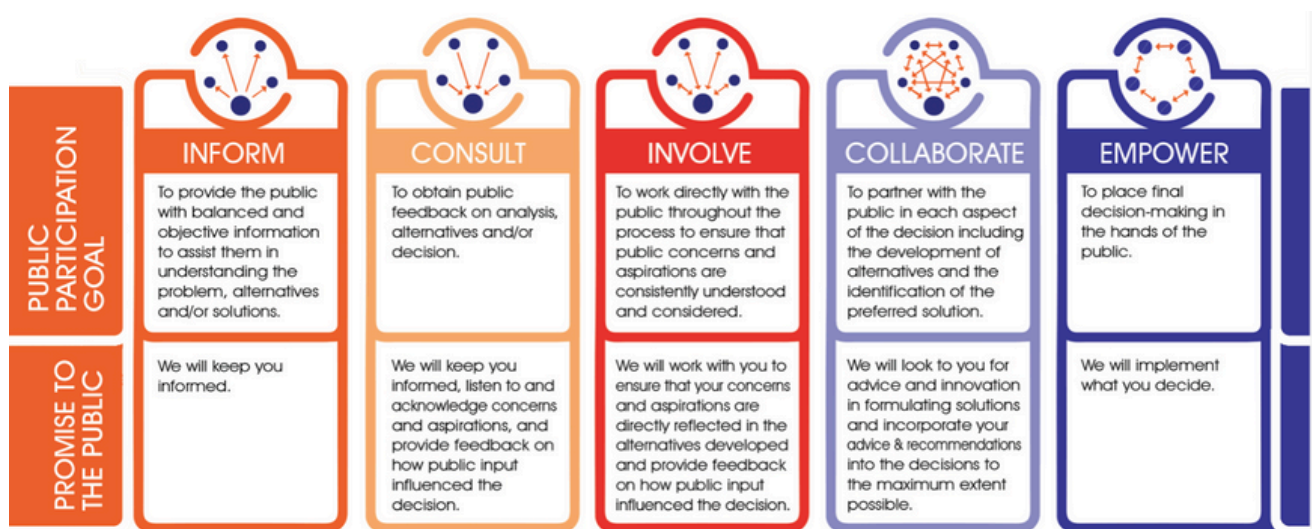
## Proposed Options

The community was asked to provide feedback on their level of agreement with the following options for the future of school facilities:

- A New K-12 School
- New K-6 School with modernized 7-12 School
- New 7-12 School with a modernized K-6 School

## IAP2 Spectrum of Public Participation

For this consultation process, the PRSD utilized the IAP2 Spectrum of Public Participation system. This engagement process fell under the "Involve" level of this system. Participants' input will be considered by the Board of Trustees' during their decision-making process regarding an update to the PRSD 2025-2028 Capital Plan.



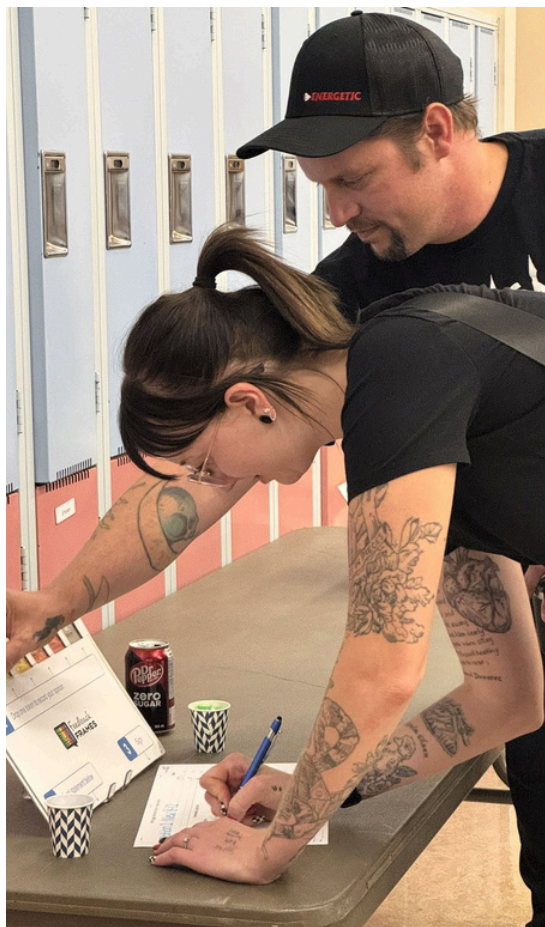
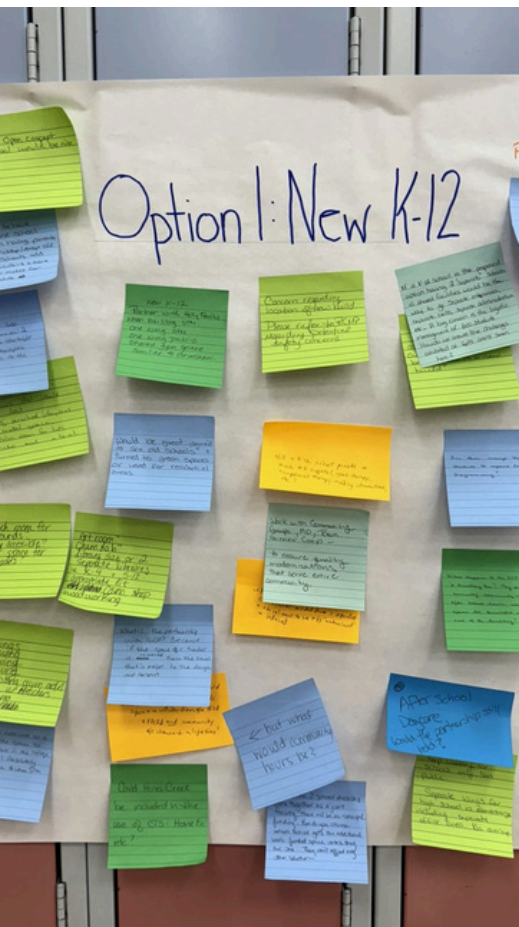
# Engagement Methods

## Method 1: Feedback Frames

The primary method for gathering feedback was to use an engagement tool called Feedback Frames. This simple analog tool for secret score voting requires participants to rate each presented option on a scale from strongly agree to strongly disagree by dropping a token in the preferred slot with all options hidden by a cover. The results were later revealed, photographed and recorded on a spreadsheet. Additionally, the Feedback Frames method provided participants with a place to record some of the reasoning for their vote in the form of strengths and opportunities, or concerns and challenges. This method provided measurable, quantitative data on the level of support for each option and allowed for qualitative comments to add context and value.

## Method 2: Open Space Conversations

To capture in-person feedback and reduce barriers, an open space engagement method was also used. Both the Board of Trustees and members of the leadership team were present to facilitate the open space conversations. They actively engaged attendees in one-on-one or small-group conversations, recording ideas, questions and concerns on sticky notes, capturing one idea per note. This method ensured that every attendee has a direct and personal opportunity to be heard.





# Summary & Analysis

## Evidence of Successful Engagement

The community engagement session held on September 9, 2025, successfully gathered a significant amount of high-quality feedback.

- Participation Rate: The feedback frames, which were the primary method for quantitative data collection, achieved a high level of participation. Analysis of the submitted documents indicates that 83% of attendees voted on at least one option using the Feedback Frames.
- Breadth of Feedback: The engagement successfully captured feedback from a diverse audience. Separate feedback sticky notes were collected from 25 staff members and 55 public participants representing the E.E. Oliver Elementary School, Fairview Jr./Sr. High School, and Fairview and Area Learning Store. This division allowed for the identification of specific concerns and opportunities from both groups, ensuring the perspectives of those directly involved in the day-to-day operations of the schools were included alongside broader community opinions.
- Feedback Capture: The use of open space conversations and sticky notes was an effective method for capturing qualitative feedback. There were 123 notes documented, providing rich, detailed context for the quantitative data.

## Quality of Feedback

The feedback received was, on the whole, of high quality, providing clear, specific, and constructive insights that directly address the project scope.

- Clarity and Specificity: Both staff and public feedback documents contained numerous specific comments regarding the strengths and weaknesses of each option. For example, concerns were raised about the loss of specific amenities like CTS spaces, double gyms, and playgrounds. These comments provided valuable context beyond the simple "agree" or "disagree" votes.
- Relevance: The overwhelming majority of the feedback was directly relevant to the proposed options and partnership possibilities. While two comments expressed frustration with the engagement process itself, and one comment spoke to the hiring of summer students, the content of the feedback remained focused on the core topic of school facilities.
- Constructive Nature: The feedback was largely constructive, with many participants offering suggestions and alternative ideas within the existing framework. Comments such as "modernize what we've got" and "think bigger, not building to meet current numbers" highlight a desire to find a long-term, viable solution rather than simply criticizing the proposals.

# Key Themes

## Preservation of Space and Programming

This was the most prevalent concern. The community, especially the staff, is highly worried about the loss of specialized spaces in a new build. This includes Career and Technology Studies (CTS) labs (Home Ec, shop), music rooms, double gyms, and outdoor spaces like playgrounds. The feedback strongly suggests that participants believed a new build would result in smaller spaces, and that modernization may not result in this same reality.

## Partnership as a Central Opportunity

There is significant support for partnerships with Northwestern Polytechnic (NWP), the Town of Fairview and the Municipal District of Fairview. Participants view collaboration as an incredible opportunity for students to access collegiate programming and for the community to gain shared recreational spaces. Another theme arose from the public feedback, with a suggestion to also partner with the Holy Family Catholic Regional Division.

## Location Concerns

The location of a new facility is a point of contention. While Divisional Staff did clarify during the public portion of the meeting that a NWP campus-adjacent location was no longer a consideration, many participants continued to have concerns regarding other locations. There was significant concern for the location of the schools in proximity to existing daycare facilities, as well as the proximity of the existing high school property to an allegedly higher crime area.



# Overall Community Position

Based on the feedback, the Fairview community's position is complex and nuanced. While the Feedback Frames indicate a slight preference for "Option 1: One K-12 School," with a consent score of 3.6/5, this support is contingent on several critical factors raised in the qualitative feedback. The community is not simply in favor of a new building; they are in favor of a comprehensive, future-focused solution that:

- Does not compromise on the size or quality of instructional and extracurricular spaces.
- Integrates meaningful partnerships with NWP and the Town of Fairview.
- Anticipates and accommodates future growth in student enrollment.

The feedback indicates that the community is wary of any plan that would result in a net loss of school amenities or fail to protect existing programs. They see value in both new construction and modernization, with a strong desire for a solution that provides the best long-term value for students and the community as a whole.

## Areas for Improvement in the Engagement Process

While the engagement was successful in gathering a high volume of feedback, some areas were identified that could be improved for future sessions to better serve the community and enhance transparency.

### **Incorporating Live Q&A**

Divisional staff received expressions of frustration from a limited number of participants who held strong preferences for a live question-and-answer period. Future sessions could allocate a dedicated, moderated time slot for questions from the floor, allowing for real-time dialogue and the opportunity for attendees to hear responses to questions they may not have considered.

### **Providing More Information Upfront**

The feedback indicates that some community members felt they lacked sufficient information to make a "fully informed" decision. For future engagements, consideration may be made to provide more detailed, publicly available information ahead of time to allow for more specific and productive feedback during the session.

# FEEDBACK FROM PRSD STAFF



# PRSD Staff Feedback

## Option 1: New K-12

Consent Vote: 5

### Strengths and Opportunities:

- The collaboration with NWP would and could be such an incredible opportunity for our students!

### Concerns and Challenges

- I feel like as a CTS teacher at the high school, CTS and career-minded focus is imperative and I do not want to see FHS modernized and reduced.
- How would the separation of elementary and high school work?
- Would there be lots of gym space?
- What would our science labs look like?
- Lack of extra space for out of school care and playschool.
- Considered location NWP is less appropriate or accessible for EEO families.
- FHS site is close to a higher crime area. Parents would be hesitant to send their kids to school unsupervised (walking or biking).
- Jr./Sr. High needs will always trump elementary needs.
- Is a community, commercial kitchen for students and community possible?
- Cafeteria for High School and Junior High?
- There will be no double gym - elementary will no longer have daily physical education
- Location if moved to college not good for children
- Collaboration with NWP - would we share facilities and possibly staff?
- In collaboration with Town and MD, what is most likely to be added to our school? Field house? Gym +1? Hockey Rink?
- There will be no playground - ten years of fundraising and leaving our new accessible playground currently under construction.
- Will there be a music room?
- Who will pay for new playground equipment?
- K-12 would be about 600 students, which is too many in one building. Grimshaw has shared that there are problems.
- Can outreach have more private rooms within?
- How will you accommodate Outreach within a new school?
- Sensory rooms? Extremely needed!
- What happens to pull out type scenarios? Where do they go?
- How would non-instructional common spaces be considered? Such as music rooms? Sensory rooms, etc?
- We will lose too much space for sports and events which are the heart and backbone of the majority of schools
- Too many unknowns. Not enough information to make a decision. What about Science labs? Especially for students entering science fields in postsecondary?
- The concern I have is the space being decreased too dramatically. Class sizes ranging from 25-35 need space and I worry a new build will be too conservative on space allocated.
- What would a playground space look like?



## **PRSD Staff Feedback**

### **Option 2: New 7-12 with a modernized K-6**

**Consent Vote: 13**

#### **Strengths and Opportunities**

- EEO's location is central and accessible for the community
- Modernized K-6 in our current location allows us to maintain our community space (gym + kitchen). Our community can not afford to replace.
- New 7-12 on the current FHS location. College students do not want high school students in their space. We need to protect our college.

#### **Concerns and Challenges**

- What space would we “lose” in modernization?
- Modernizing EEO means we lost spaces. What would be lost?
- New 7-12 means we lose space. What would be lost?
- Concern regarding the space of CTS spaces.

### **Option 3: New K-6 with modernized 7-12**

**Consent Vote: 3**

#### **Strengths and Opportunities**

- A new 7-12 schools means we lose our Home Ec labs, shop, two-station gym...modernize what we've got.

#### **Concerns and Challenges**




- Location?

**25 Participants**  
**37 Recorded Sticky Notes**

# FEEDBACK FRAMES RESULTS



## Overall Quantitative Data

ID	Score	Consent (no disagreement)	Photo	Idea	Strong Agreement 5	Agreement 4	Neutral 3	Disagreement 2	Strong Disagreement 1	Not Sure	Total Tokens	Signatures	Tokens/Signatures	Percentage of total attendees who participated
LRJ	3.6	77%		Option 1: New K-12	15	14	7	4	7	0	47	42	47/42	85%
DDF	3.1	69%		Option 2: New 7-2, modernized K-6	6	17	11	8	7	0	49	46	49/46	89%
MJV	2.7	51%		Option 3: New K-6, modernized 7-12	3	7	12	14	7	0	43	41	43/41	74%

# FEEDBACK FROM THE PUBLIC





# Public Feedback

## Option 1: New K-12

### Strengths and Opportunities:

- Would love to see the collab between school division
- Makes pickup/drop off easier for multi-kid families
- Could utilize old school areas for green spaces or residential areas
- Comp school add trades
- Would like to see it built to allow future High School collaboration with HFCRD
- Like idea of one school, don't like transition from Grade 6 to Grade 7, also mentorship opportunities for high grades, also pick up and drop off for families with kids in different grades
- If it's a new location, yes. All possibilities for purpose built design to meet all the wants and needs exists.
- All spaces are new and built for 50 years+
- Best option of the three presented but not best possible option. Think bigger, not building to meet current numbers when there are many possibilities that numbers could grow. It always costs more to add after the fact. And portables are built much cheaper than 20-30 years ago, with much shorter life expectancy, than real school builds. Partnership with Town, MD, corporate, all schools together should be an option. So bigger facilities, not smaller. Going from 2 full sized gyms, atriums, common areas to smaller in one school could be worse than what we have now.
- What about a community centre and school like Grimshaw?
- New K-12: Partner with Holy Family when building STM. One wing STM, one wing public. Shared gym space, similar to Grimshaw.
- Would be great to see old schools demolished and turned int green spaces or used for residential areas.
- Huge bonus to have all kids in one school rather than having parents trying to pickup or drop off at multiple schools. Add in extra curricular and more than one child makes for a crazy schedule.
- Would like to see the Town of Fairview and MD come to the table to explore multiplex addition on to the new school

### Concerns and Challenges

- Should the school have a fire then we would be looking for space for 500 students instead of 250!
- Access to drugs to the elementary kids
- Smaller classrooms and schools don't leave room for children with physical disabilities
- Leave schools alone, add gymnasiums to each school
- Classroom size, also 600 kids at one site based on current numbers,. How do you manage that?
- None of the current locations allow for a build that wouldn't involve compromise and cutting of aspects.
- Must have separate wings/admin areas for K-6 and 7-12.
- Very biased presentation. It is clear that the Division wants new. New is not a better idea. We have two beautiful facilities already.
- Concerns of library remains private vs public
- If a K-12 school is the proposed option, having two separate schools with shared facilities would be the way to go. Separate entrances, separate bells, separate administration etc. A big concern is the logistic management of 600 students. How do we ensure the challenges exhibited at GPS aren't seen here?
- Can programs such as the playschool out of school care be included in a new build?
- Are there enough high school students to expand CTS programming?
- What happens tot he EEO gym and ancillary Room? They are currently community use spaces after school hours. Would these spaces be demolished with the rest of the building?

## Public Feedback

- If community use spaces continued to exist, what would their hours be?
- After school daycare, would the partnership still hold?
- Keep library for schools only. Not public. Separate wings for high school versus elementary including separate office area. No overlap
- Concern regarding the location of a new build. Please refer to RCMP regarding potential safety concerns.
- No open concept school would be nice.
- Will a K-12 school provide as much K-6 supports (speech therapy, occupational therapy, reading interventions, etc.)?
- Unless the two school divisions come together as a joint facility, there will be no municipal funding. How do you choose which school gets the additional municipal funded space unless they are one? They can't afford any other situation.
- Will there be an art room? Chemistry lab? What will the library size be? Will there be two separate libraries (ex. K-4 and 5-12) with appropriate literature? Cosmetology? Shop? Woodworking?
- What is the partnership with NWP? Because if the space for trades is removed from the school that is mayor to the design and footprint.
- I know it's beyond today's scope, but would really like to see the most flexible space and collaboration between PRSD and HFCRD and community because chance of a lifetime.
- Could Hines Creek be included in the use of CTS and Home Ec etc?
- Gym space: Solid division between spaces re: noise and fewer distractions
- Concern of flex spaces that would be lost. Especially preschool and daycare rental space, extra room for kids who need a break.
- How much room for playgrounds? Are they accessible? Outdoor space for all grades?
- 3 wings, K-4 wing, 5-8 wing, 9-12 wing, keep existing gym, add new gym with bleachers and workout area.
- I am relieved as a parent that the option to do a joint venture with the College is off the table! Absolutely hated that idea when STM proposed that.

## Option 2: New 7-12 with a modernized K-6

### Strengths and Opportunities

- Playground equipment is expensive!
- Get to keep gym availabilities open for everyone
- Having separate schools is good especially if something happens with one school
- More opportunity for improved high school programming
- I feel that its easier to add more [unknown] space verses the CTS etc space of high school
- K-6 can learn the basics of education in poorer facilities with less negative outcomes. Investing in top notch facilities that offer top notch and varied experiences helps channel career choices.
- Why are schools designed for such a short period of time? Prefer 7-12 new, remodel K-6
- Recognize and strengthen joint-use agreements for EEO, allow for more community space, would allow to keep same or similar footprint.
- Build the high school space to allow for future amalgamation of high school programming with HFCRD. Fairview is not big enough for two high schools - it does a disservice to the 10-12 students.
- New 7-12 in partnership with NWP so your options heading into the workforce are as good as can be. Room size, number of options, newest technology.

### Concerns and Challenges

## Public Feedback

- What will happen to the old school?
- I don't like the thought of smaller spaces.
- EEO is very old - can they redesign for it to be 125 years old?
- DON't waste your money making a school smaller
- If the foundation meets design specs, don't be scared to wipe the slate if you can provide a short-term alternate amenity for schooling while work is being done.
- Think bigger - we need more access to gyms, public spaces, what happens to existing buildings - need to join with other schools, MD, Town, to build sportsplex with schools attached.

## Option 3: New K-6 with modernized 7-12

### Strengths and Opportunities

- I like that the two schools are separate
- I think 7-12s would benefit more from a new school
- I believe most important is keeping an IA, Home Ec, Art, Science lab, computers and more options for students. Gym space and classrooms should get no smaller. Modernization of both schools and collaborating with other parties NWP, Library, Daycare #1.
- If new means smaller K-6 might be a better option as the option spaces are important to the 7-12 grades and K-6 stay in classrooms more.

### Concerns and Challenges

- Limited opportunity to improve high school programming
- If the high school was deemed more appropriate to modernize verses K-6, then I would be in favour of that (choose most economical option)
- I don't think it's a good use of funds to make a school smaller in the process of modernizing.
- People should expect to advance to better things moving from something fantastic to something that's tired would be disappointing.
- Building/modernizing will be smaller. Instead add new on to existing - make better use of facilities.
- Playgrounds are expensive!
- K-6 has to stay with the daycare. Both schools now are in good locations to allow kids to walk or transfer verses being moved to one side of town. Not in best interest for K-6.

### General

- Is there any possibilities of daycare and Out of School Care space within the schools?
- Like to increase gym space. Modernize both schools.
- A new option: Modernize both (The Framework of "large" instructional classrooms are there.)
- Option #4: K-12 or 7-12 at NWP and K-6 modernize - Back to NWP site. Add to area with pool, fitness centre, or move to separate new area. Add 30km/h speed area with streetlight and crosswalk for the few students who actually walk to school, since most parents seem to drive their kids anyways. Or have collection corners where students catch a bus to new school. Take advantage of many spaces and trades and available possibilities at NWP. Build a sportsplex on site of school so our town could host events. It would add to hospitality in our area as well, hotels, motels, restaurants. Kids won't need to go to Hines Creek for skating - hockey practice, figure skating, use this once in three generation opportunity.

## Public Feedback

- This is a once in three lifetimes opportunity, when we are getting two new schools - potentially. And we shouldn't blow it by settling for something that will be too small - too late. Don't waste this by thinking too small. We need big ideas - big thinkers - with expertise in how it is possible because it is.
- Real survey should have been emailed with enrollment this year to get a true stat of what parents would like to see (google form).
- Would be nice to have representative from Manning and Red Earth to be at the next meetings so that they could after six months or a year have pros or cons, or this didn't work like we thought it would conversation with us looking at following in their steps. Wisdom after the fact would help the next group possibly.
- Option 4: Smaller renovations to both schools, 10 year plan, rather than 50 year.
- Multi-school division option, like in Grimshaw, not necessarily in favor of because the school division never seem to be mature enough to fully work together. Catholic in Grimshaw, losing students but force public side to get portables or rent town space verses using empty space in Catholic side.
- My number one option would be a modernization of both schools even if it takes a long time, we can make do. Demolishing buildings is not in the best interest necessarily. New is not necessarily better.
- Work with community groups, MD, Town, Fairview, Coop, to ensure quality modernizations that serve entire community.

## Unrelated

- Why are local university students hired for summer work, why are the trades students not hired?
- Thought the process tonight was a little rude by shutting people down. Put a lot of people off of the ability of PRSD to work alongside or listen to parents and or community.
- I don't like the system that was used tonight! By not allowing parents/community members to ask questions and hear the reply, really does not give a person a broader view of comments or concerns that one has not thought of. A person learns a lot with discussions. I find it very disrespectful as a parent to not be able to voice my opinion.

**55 Participants**  
**86 Recorded Sticky Notes**